

FOR IMMEDIATE RELEASE

Media Contact:

Name: Chelsea Hulme

Title: Director

Phone: 416-993-8011

Email: chelsea@thecardinalgallery.ca



TORONTO, October 20, 2020.

The Cardinal Gallery presents,

**JOAN LATCHFORD
"LOVE ISN'T LIMITED"
PHOTOGRAPHY EXHIBITION**

Exhibition Dates: November 14, 2020 - January 31, 2021

Receptions:

Saturday November 14, 2020. 2:00pm-9:00pm & Sunday November 15, 2020 12:00pm-5:00pm

Sign up link: www.signupgenius.com/go/latchford

Posthumous exhibition. Family member in attendance.

Address: 1231 Davenport Road, Toronto

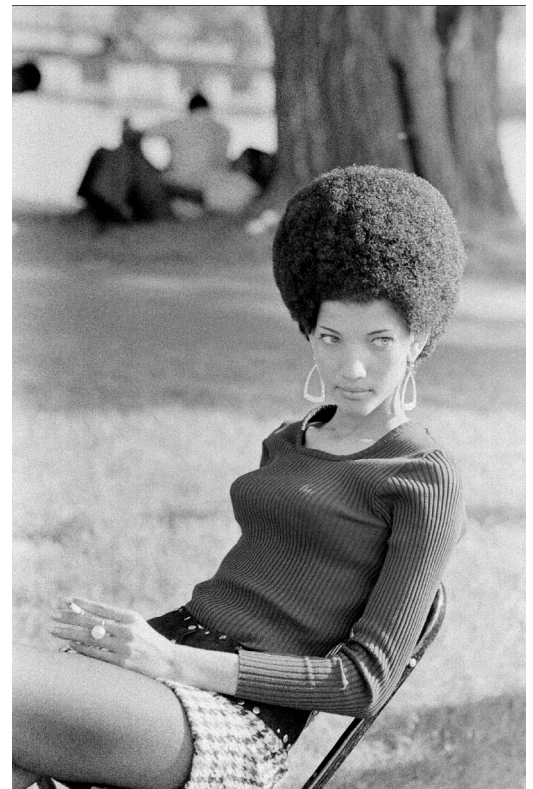


LOVE ISN'T LIMITED comprises select B&W photographs from Joan Latchford's 60s & 70s era exploration of Toronto's diversity and diaspora. Through her signature "spontaneous and unposed technique" we witness Latchford's keen eye for documenting the rarely recognized lives of people new to Toronto.

Starting in the 1960s Joan Latchford was commissioned by the NFB Stills Division to capture images exploring Toronto's diaspora under the assignment headings: "Children of Canada" and "Middle Class Life". Latchford, who was tired of seeing Canada's minority communities documented as "poor, angry confrontational... reinforcing stereotypes" set out to photograph people living their everyday lives at home and on the streets.

Many of Latchford's photographs from this era focus on the lesser seen lives of those who had recently encountered great geographical transition: Hungarian refugees unable to find commensurate work because of language barriers, American draft resisters seeking physical refuge and intellectual escape but prohibited from working until they had landed immigrant status and, most notably, her intrigue with Toronto's booming Caribbean communities, newly immigrated to Canada through the era's enhanced multiculturalism policies.

Joan Latchford, who had always been drawn to those experiencing transience and change, and the unique energies of shared and competing existence, captured the city's spontaneity, growth and diversity in a way that had rarely been documented in Canada.



Born in Canada but educated in Britain, Latchford initially trained as a Public-School teacher in England. In 1958 she taught "emotionally disturbed" boys in Brixton. Her deep Catholic faith led her to enter the convent there where she became a nun for 7 years. She eventually realized that a different life was calling her and moved to Toronto. She started a drop-in every Tuesday evening for immigrants new to Canada to meet, drink coffee and engage in other activities with English-speaking people. It was one fateful Tuesday evening in her tiny apartment with 75 people in attendance that she met her future husband Frank. He proposed to her three weeks

later and they built a family of eight children together, 6 adopted, 2 "home grown". Motherhood didn't deter her ambition to engage with community and the Latchford home was open to any and all who needed safe haven. Through her photographs we see not only the depth of an era but also the interests and curiosities of a photographer who was called by all that urban life had to offer. Joan passed away in 2017 but her legacy lives on through her poignant images.

"A lot of the photography I did was with the intention of...showing people, say of different races, ages, etc., in the same situation so that they could relate to each other without resorting to stereotypes, through the situation"

Joan Latchford – BROADSPEAK Interview

This collection of silver gelatin archival prints are available in very limited editions at The Cardinal Gallery.



The Cardinal

The Cardinal is a creative exhibition space with a focus on showing fine art photography as well as providing an inviting event venue for the arts community.

The Cardinal | 1231 Davenport Rd. Toronto, ON M6H 2H1 | 416-575-1116
info@thecardinalgallery.ca | www.thecardinalgallery.ca

Connect with us



[@thecardinalgallery](https://www.instagram.com/thecardinalgallery)



[CardinalGallery](https://twitter.com/CardinalGallery)



[TheCardinal](https://www.facebook.com/TheCardinal)